

Girls' Basketball

Louise Epperley	F	Charlotte Akers	G
Merle Ward	F	Patsy Siner	G
Gloria Duncan	F	Isabelle Bain	G

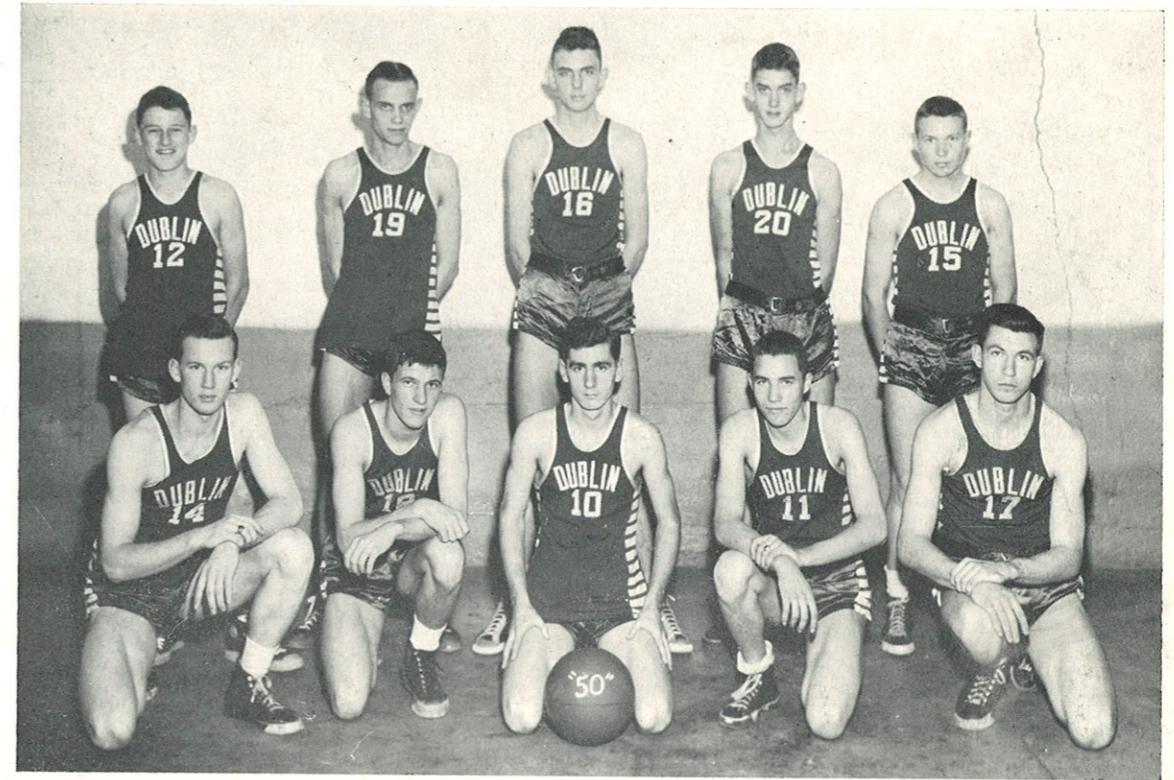
Louise Epperley, Merle Ward — Co-Captains

11/1950
4/5
6/4

A girls' basketball team, coached by Mrs. Robert Hartsock, was reorganized the past winter. The team used Pulaski High School gym and played a total of five games. A large number of the same girls will be playing next year and with a year of experience, the prospects look hopeful for a good strong team in the winter of '51.



1st Row: Isabelle Bain, Anna Martin, Merle Ward, Sara Mae Palmer, Bonnie Harris, Ruth Akers, Louise Epperley, Gloria Duncan, Mary Jane Thomas.
2nd Row: Mrs. Hartsock, Janet Humphrey, Nancy Kay Micou, Norma Jean Perkins, Charlotte Akers, Elma Lilly, Patsy Siner, Rachael Humphrey.



1st Row: Carl Bolt, Donald Martin, Vernon Lance, Edward Wheeling, Charlie Sumner.
2nd Row: Douglas Meredith, Johnny Creger, R. J. Head, Clifford Sutphin, Eugene Hopkins.

Boys' Basketball

The Dukes played eleven games and won four of them this year. They defeated Galax and Pearisburg once, and Draper twice. They were defeated two times by Narrows and Pulaski and were on the short end of games with Blacksburg, Galax, and Pearisburg. The Dukes were placed in the offensive department by Charlie Sumner and the whole team played good defensive ball the entire season.

	<i>Points</i>
Donald Martin (F)	33
Ed Wheeling (F)	34
Charlie Sumner (C)	175
Carl Bolt (G)	57
Vernon Lance (G)	52
Douglas Meredith (F)	6
John Creger (F)	15
R. J. Head (C)	
Eugene Hopkins (G)	
Clifford Sutphin (G)	